

Waveguide to Coaxial Adapter, Right Angle WR-28 to 2.92mm Female/Male



Product Overview

AT Microwave provides many kinds of waveguide to coaxial adapter from low frequency to 110GHz, with waveguide WR-28 to WR-10 and coaxial connector from 2.92mm, 2.4mm, 1.85mm to 1.0mm.

There waveguide to coaxial adapters are with good return loss and low insertion loss. Both Female and Male coaxial connectors are available.

More information, please visit www.atmicrowave.com

Advantages

- ✓ Low Insertion Loss
- ✓ Low Return Loss
- ✓ Low Cost
- ✓ Fast Delivery Time

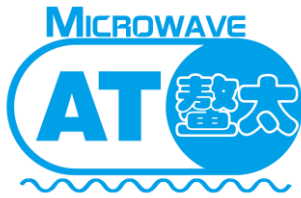
Application

- ✓ 5G & 6G Systems
- ✓ System Setups
- ✓ Accurate System Measurements
- ✓ General Labs Test

Key Features

Parameter	Min	Typical	Max
Frequency	26.5GHz		40GHz
Insertion Loss		0.5dB	
Return Loss		20dB	
Power Handling			10W CW
Temp Spec		25C	
Operating Temp	-40C		85C





AT-WC-2829X-R

Waveguide WR-28 to 2.92mm Adapter

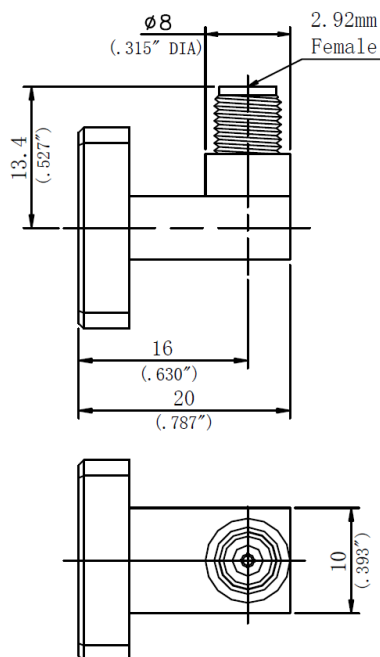
Mechanical Information

Item	Description
Waveguide port	WR-28 with UG599/U Flange
Coaxial Port	2.92mm Connector
Material Type	Copper
Finish	Gold Plated
Weight	30g
Dimension	See outline

Selection Guide

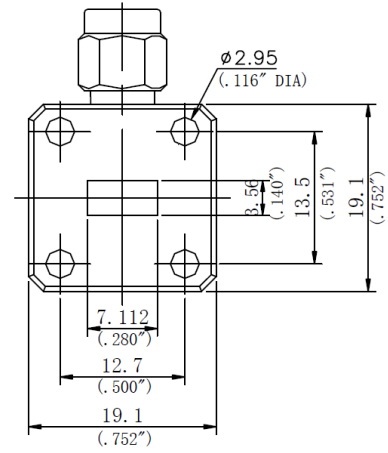
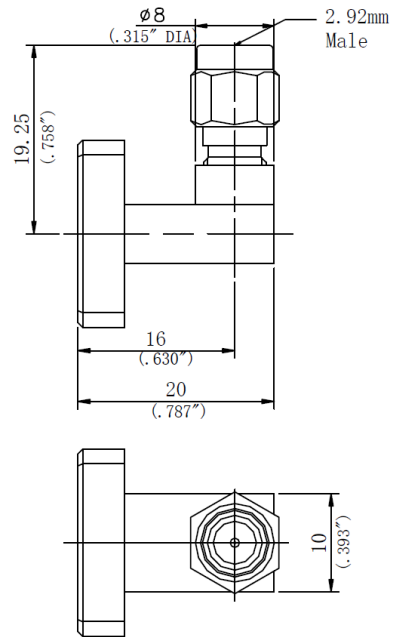
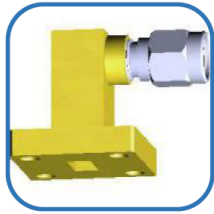
Item	Description
AT-WC-2829F-R	WR-28 to 2.92mm Female Adapter
AT-WC-2829M-R	WR-28 to 2.92mm Male Adapter

Dimension: (unit inch)



AT-WC-2829F-R





AT-WC-2829M-R

